





KIRIPOTIB
 +264 62 581 419

MEDICAL SOS
 10 111

KIRIPOTIB FLYING FARM Private Airfield (PPR) FYKH

S 23° 19' 40" E 17° 56' 50"

Elev 1368m / 4488ft Var 14° (2008/9)

RUNWAYS

18/36 1500m x 50m **08/26** 1410m x 90m

KIRIPOTIB INFO 120,250 MHz +264 (0)62 581 419

Kiripotib CFI +264 (0)81 399 0564

Bitterwasser Info 123,600 MHz +264 (0)81 303 0393

Veronika Info 123,200 MHz +264 (0)81 401 0185

Pokweni Info 120,200 MHz +264 (0)81 272 2594

Gliding Zones

GND – FL145 123,800 MHz

FL145 – FL195 124,700 MHz

Windhoek CTRL 124,700 MHz +264 (0)62 702 490 491

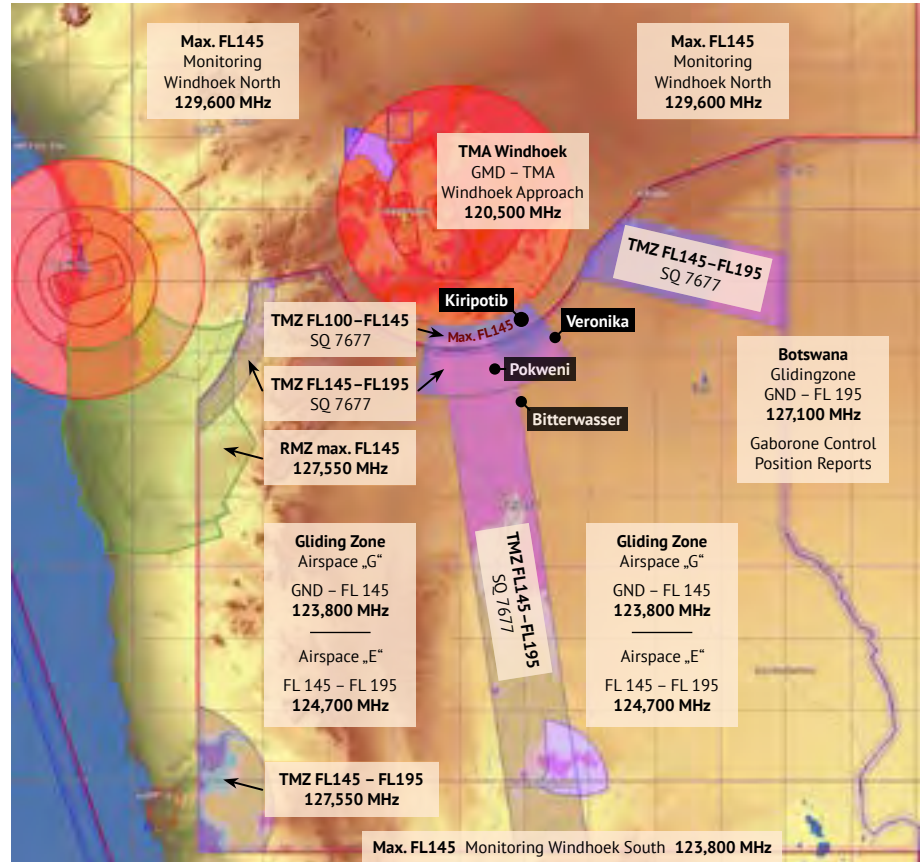
Windhoek APPR 120,500 MHz +264 (0)62 702 490 491

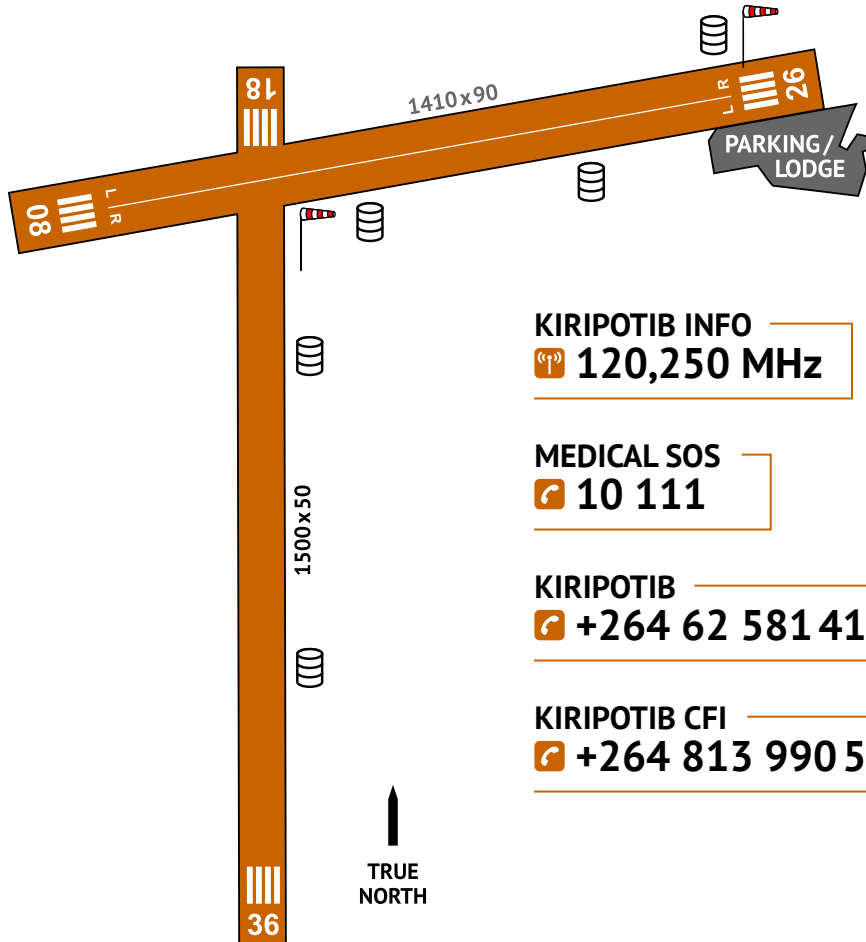
Windhoek TWR 118,100 MHz

Eros TWR 118,700 MHz +264 (0)61 702 090 091

Keetmansh. TWR 118,300 MHz

Unmanned Fields 124,800 MHz





KIRIPOTIB INFO
 **120,250 MHz**

MEDICAL SOS
 **10 111**

KIRIPOTIB
 **+264 62 581 419**

KIRIPOTIB CFI
 **+264 813 990 564**

RADIO TERMINOLOGY

TAKE-OFF

Kiripotib TRAFFIC, glider “call sign”
 ready for take-off in 1 minute
 runway “xy”
 / “call sign” taking off on runway „xy“

LANDING

Kiripotib TRAFFIC, glider “call sign”
 10 km “west/east/south”
 of Kiripotib for landing
 / on downwind for runway “xy”
 gear down and locked

SAMPLE FOR INFORMATION

Kiripotib GROUND glider “call sign”
 request wind information
 / request runway in use